

# U2™ Revision Stem

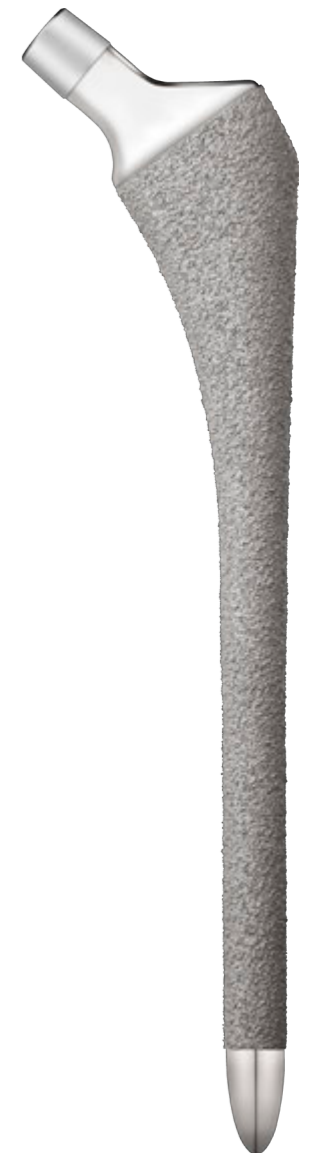
Revision Femoral Hip System



### ***U2 Revision Stem –***

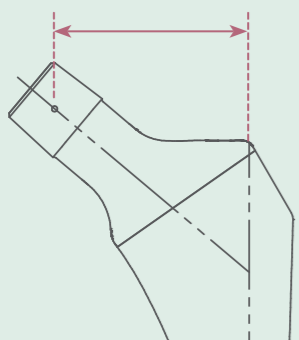
The U2 Revision Stem is a monoblock fully Titanium Plasma Spray (TPS) coated cylindrical stem optimized for revision hip arthroplasty.

The design rationale of the U2 Revision Stem is based on primary U2 Hip Stem. It shares in the same geometrical neck concept and also utilizes the tri-wedge geometry to achieve implant stability, similar to the primary system. However, the revision system offers a shorter neck offset design than the primary system to help facilitate joint reduction in revision patients. 180 mm and 230 mm stem length options with Ø11 mm to Ø18 mm distal diameter are available to allow for treatment of patients with bone deficiency and anatomy variations.



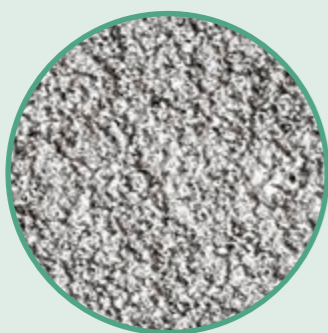
**U2 Revision Stem Offset Length**

- 3~5 mm shorter than U2 hip stem



**Shorter Offset Than Primary Implant Designs**

- Facilitate joint reduction for patients with soft tissue scarring or contracture from previous surgeries

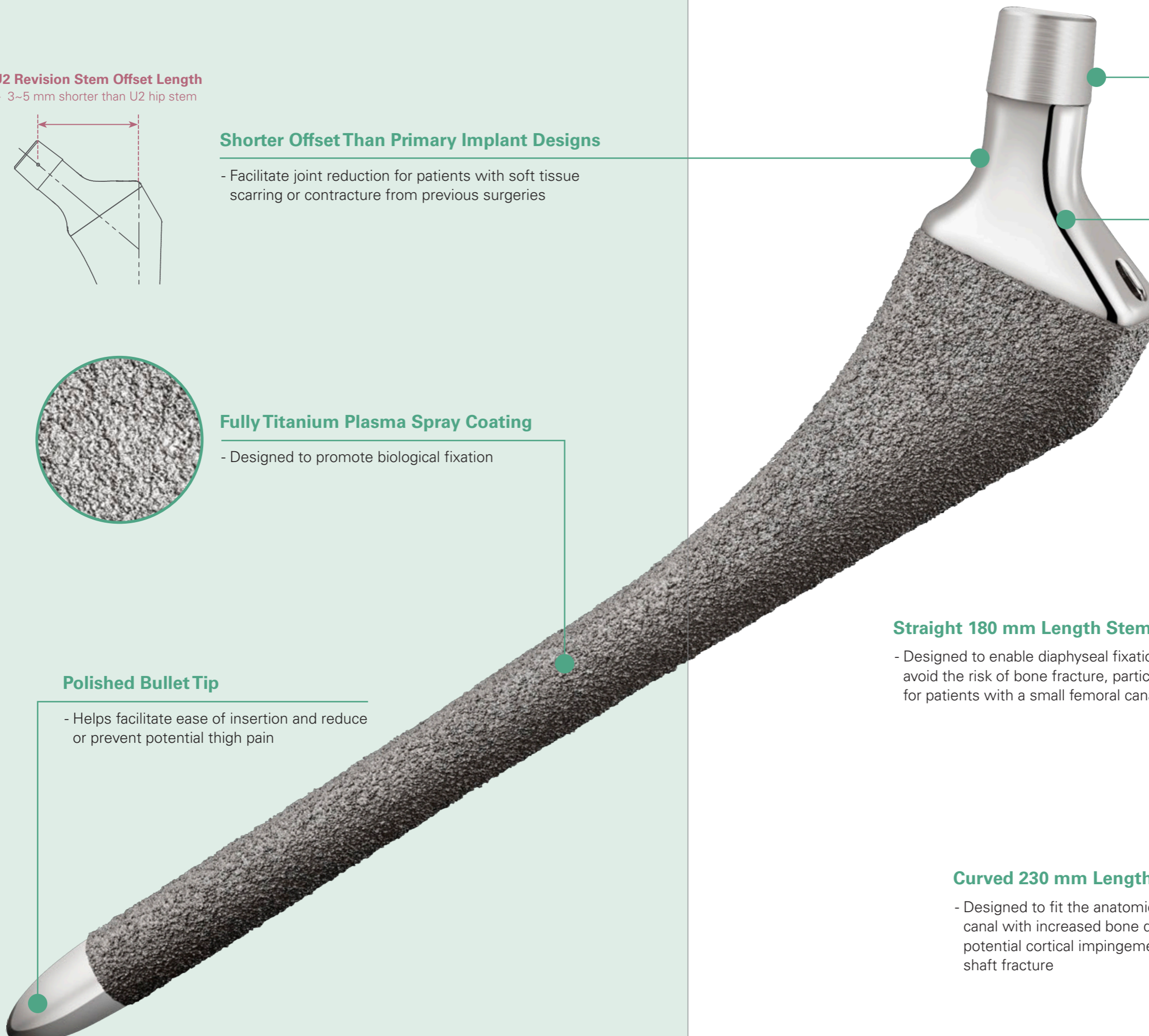


**Fully Titanium Plasma Spray Coating**

- Designed to promote biological fixation

**Polished Bullet Tip**

- Helps facilitate ease of insertion and reduce or prevent potential thigh pain



**12/14 Neck Taper**

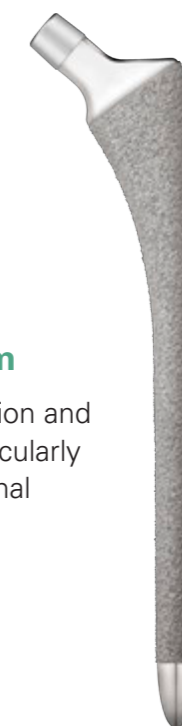
- Accommodates a complete selection of femoral heads

**Proximal Tri-Wedge**

- Designed to provide rotational and axial stability

**Straight 180 mm Length Stem**

- Designed to enable diaphyseal fixation and avoid the risk of bone fracture, particularly for patients with a small femoral canal



**Curved 230 mm Length Stem**

- Designed to fit the anatomical shape of a femoral canal with increased bone deficiency and prevent potential cortical impingement and intraoperative shaft fracture



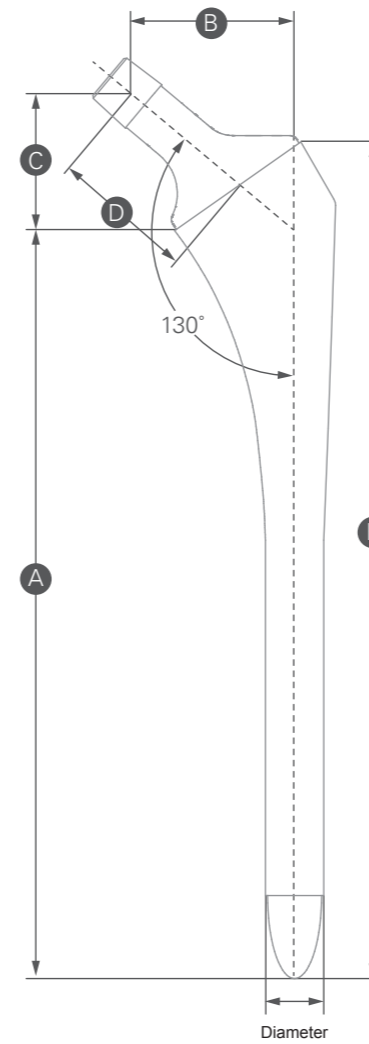
Anterior Bowing

# Order Information

## U2 Revision Stem



Catalog Number		Description
<b>Straight</b>		
	1104 - 1611	Ø 11
	1104 - 1612	Ø 12
	1104 - 1613	Ø 13
	1104 - 1614	Ø 14
	1104 - 1615	Ø 15
	1104 - 1616	Ø 16.5
	1104 - 1618	Ø 18
<b>Curved</b>		
Left	Right	
1104 - 1711	1104 - 1811	Ø 11
1104 - 1712	1104 - 1812	Ø 12
1104 - 1713	1104 - 1813	Ø 13
1104 - 1714	1104 - 1814	Ø 14
1104 - 1715	1104 - 1815	Ø 15
1104 - 1716	1104 - 1816	Ø 16.5
1104 - 1718	1104 - 1818	Ø 18



Diameter	A Medial Length	B Offset	C Vertical Height	D Neck Length	E Lateral Length
<b>Straight</b>					
Ø11	180	35	24.6	27	199
Ø12	180	35	25.6	27	200
Ø13	180	40	31.5	35	200
Ø14	180	40	32.9	35	203
Ø15	180	40	33.4	35	204
Ø16.5	180	45	37.0	41	204
Ø18	180	45	36.7	41	205
<b>Curved</b>					
Ø11	230	35	24.6	27	249
Ø12	230	35	25.6	27	250
Ø13	230	40	31.5	35	250
Ø14	230	40	32.9	35	252
Ø15	230	40	33.4	35	254
Ø16.5	230	45	37.0	41	254
Ø18	230	45	36.7	41	254

Unit: mm

Please note that all United Orthopedic Corporation product brochures have been authored in the English language. Any translations into other languages have not been reviewed or approved by United Orthopedic Corporation and their accuracy cannot be confirmed. Any questions regarding United Orthopedic Corporation products should be directed to United Orthopedic Corporation at [unitedorthopedic.com/contact](http://unitedorthopedic.com/contact).

The CE mark is valid only if it is also printed on the product label.

